

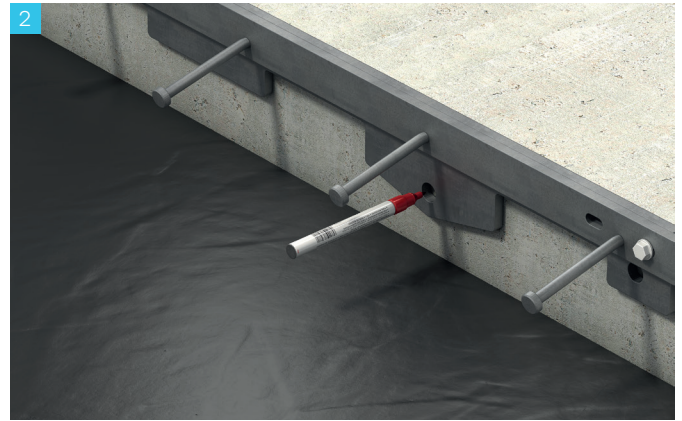
Installation Guide

Dynamic Extend

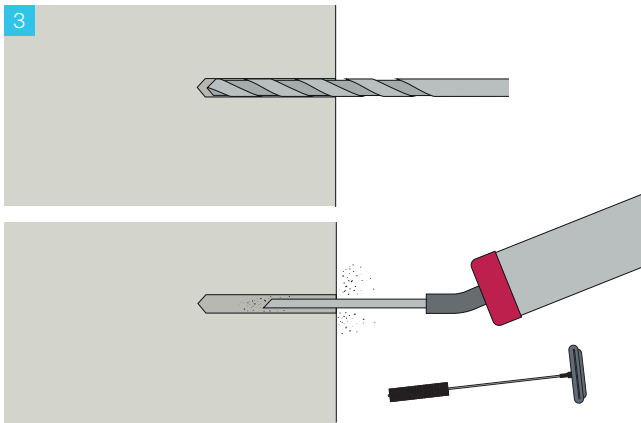
Installation Procedure



1 Prepare the existing slab for installation of Iседio Dynamic Extend profile by ensuring the face of the slab is straight, flat and the top and front is free from loose debris.



2 Align Iседio Dynamic Extend profile to the top edge of slab and mark drill hole points using a marker on the face of the slab through the pre-drilled holes in the profile.



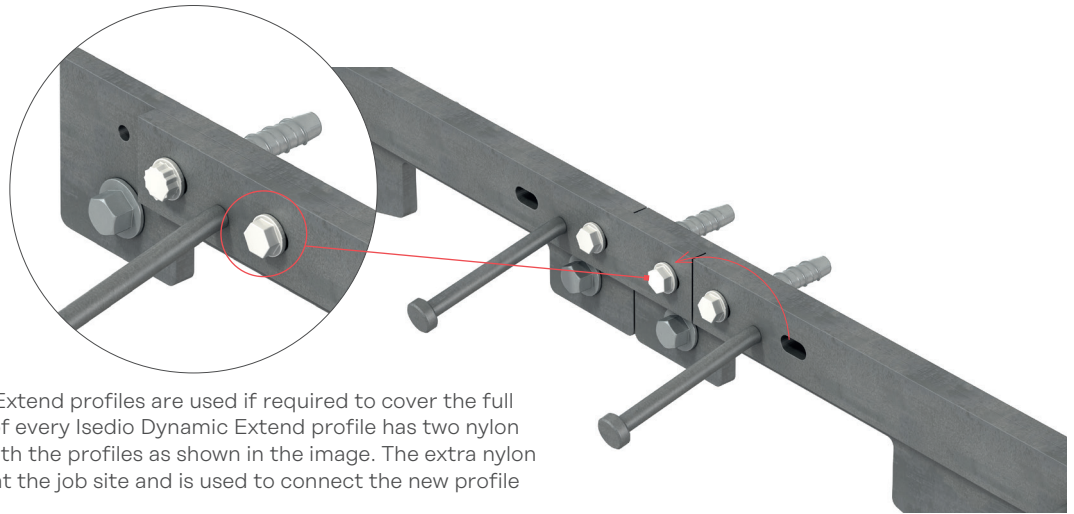
3 Ensuring the drill is perfectly horizontal and perpendicular to the face of the slab, use a 12mm drill bit to drill 95mm deep holes at the location of the marked points. The holes should be cleaned by blowing with compressed air and brushing with appropriate diameter brush at least three times. Ensure the hole is completely free of dust, debris or any other contaminants. Dustless drill bit can be used alternatively as well.



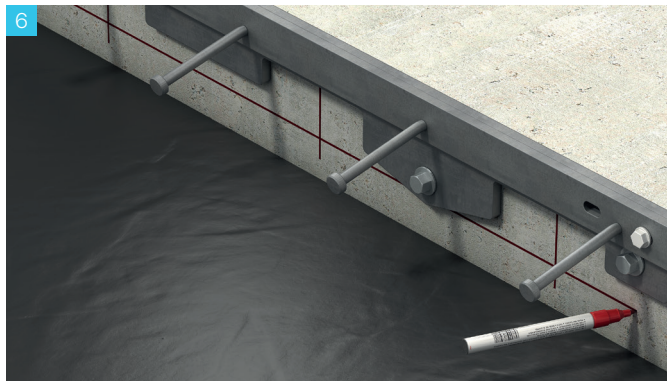
4 Once the drilled holes are properly cleaned, align Iседio Dynamic Extend profile to the top of existing slab edge and install it to the face of concrete with the provided Hobson Xbolt Galvanized Screw Anchor M12 x 100mm through the pre-drilled holes in the profile. The installation torque required for the M12 screws is 80Nm. Please refer to the manufacturers installation instruction document for the screwbolts.

Installation Guide

Dynamic Extend



5 Multiple Isedio Dynamic Extend profiles are used if required to cover the full length of the joint. One end of every Isedio Dynamic Extend profile has two nylon bolts provided as standard with the profiles as shown in the image. The extra nylon bolt (as marked) is removed at the job site and is used to connect the new profile with the existing one.

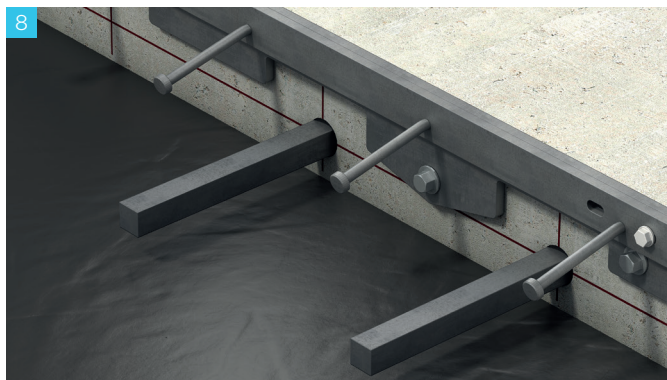


6 Mark drill hole locations at the specified centres for the post installation of the dowels to be used with Connolly Flange Dowel Box (FDB).

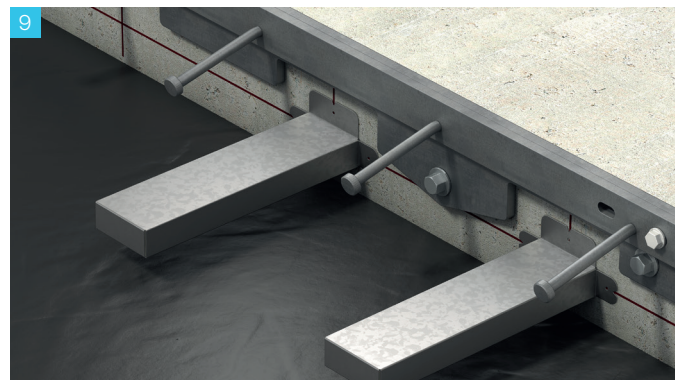


7 The drill holes are to be located in the centre of the slab depth and should be perfectly horizontal to allow for unrestricted movement of the slab. The holes should be cleaned properly prior to installation of dowels with epoxy. Refer to the epoxy manufacturer's installation guidelines for complete instructions. General installation parameters are provided below:

Shape	Dowel		Drilled Hole	
	Size/Dia (mm)	Length(m)	Dia (mm)	Depth (mm)
Square	16	400	24	200
Square	20	400	30	200
Square	25	450	38	225
Square	32	450	50	225



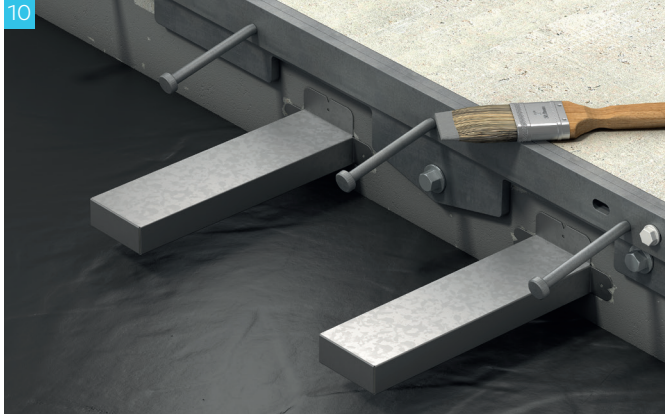
8 Inject Fischer FIS V 360 S epoxy into the clean drilled holes up to $\frac{2}{3}$ rd the hole depth and insert the dowel into the hole. Ensure the dowels are perpendicular to the face of the slab. Refer to epoxy manufacturer's installation guidelines for detailed information.



9 As the chemical adhesive is fully cured and the dowel is set in concrete, push Connolly Flange Dowel Boxes (FDB) over the dowels.

Installation Guide

Dynamic Extend



Apply bond breaker to the exposed face of the slab prior to placement of concrete for the second pour. The application of bond breaker to the existing face is important to prevent bonding of new concrete to existing concrete.



Place the specified slab reinforcement and pour concrete for the new slab. Ensure proper vibration is conducted in the freshly poured concrete to allow for compaction and elimination of air pockets. Care should be taken to not disturb the profile or dowels with the vibrator.